

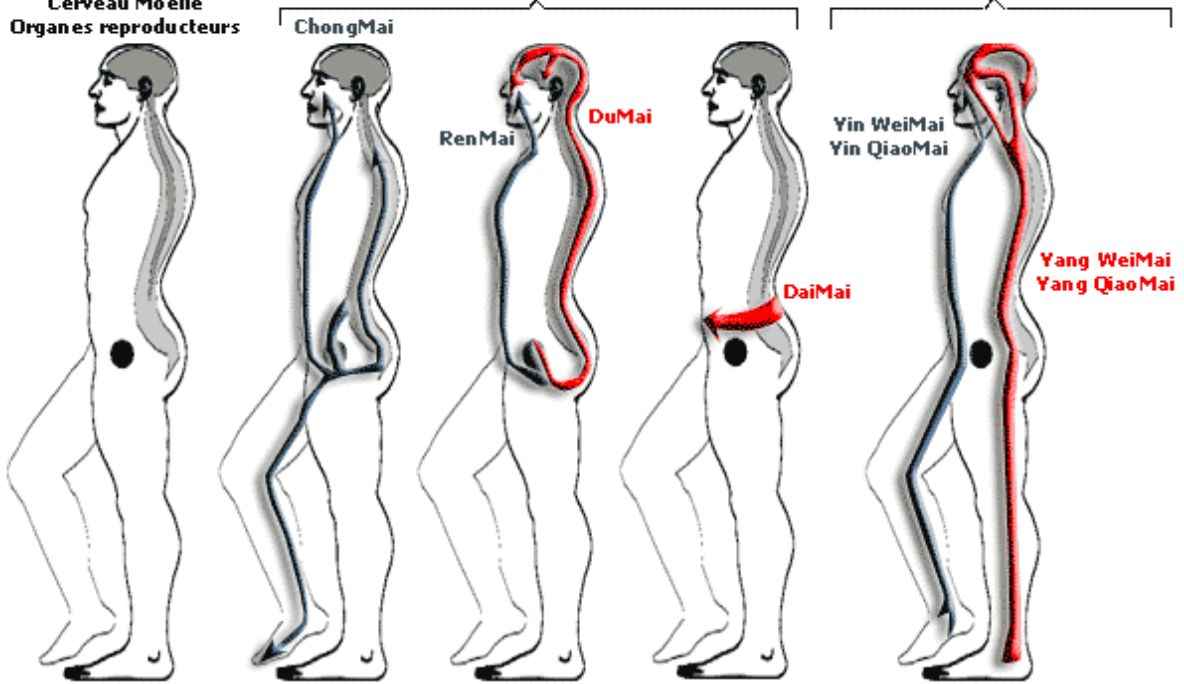
LES VAISSEAUX MERVEILLEUX, MERIDIENS EXTRAORDINAIRES, MERIDIENS CURIEUX

ENTRAILLES CURIEUSES
en lien avec
les Méridiens curieux
Cerveau Moelle
Organes reproducteurs

LES MÉRIDIENS CURIEUX (MERVEILLEUX VAISSEAUX)

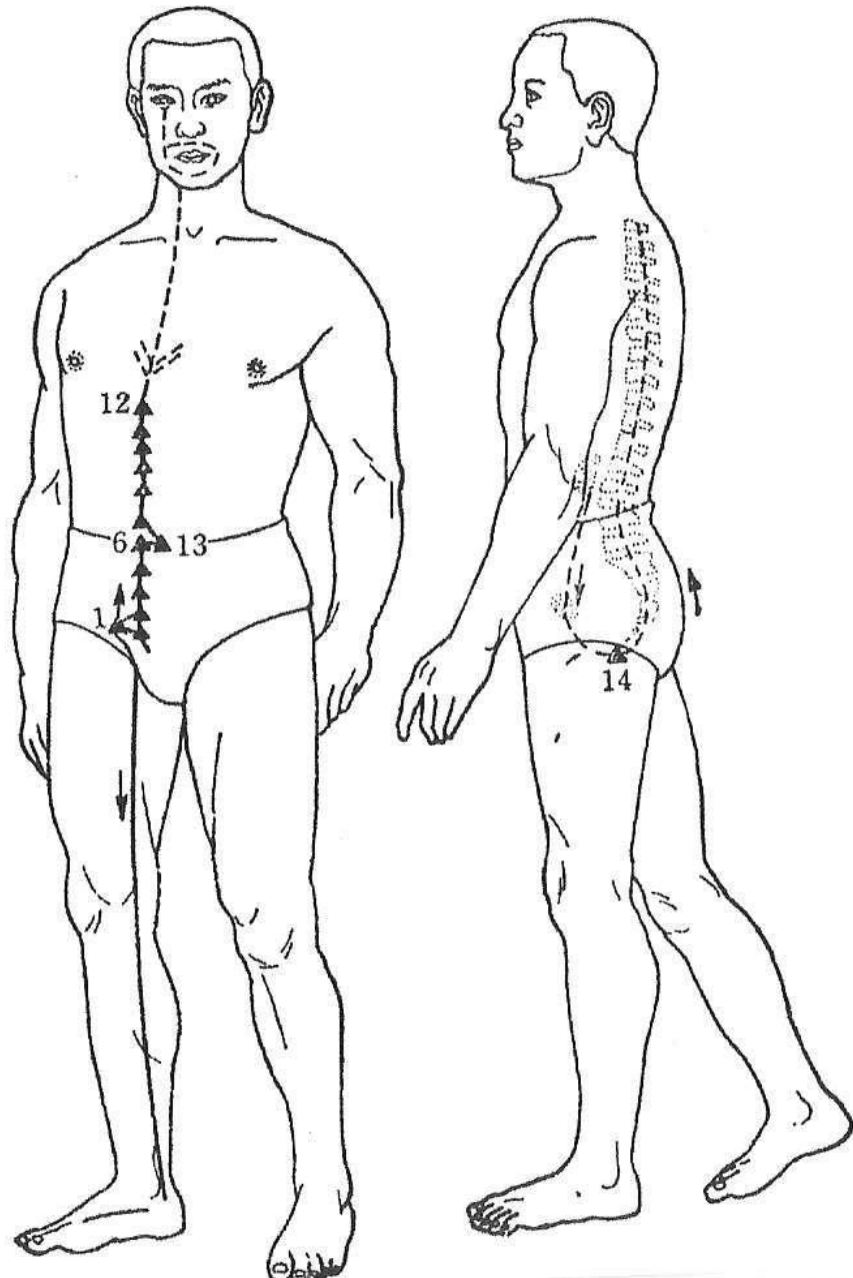
Quatre Méridiens du tronc

Quatre Méridiens des pieds



Le CHONG MAI

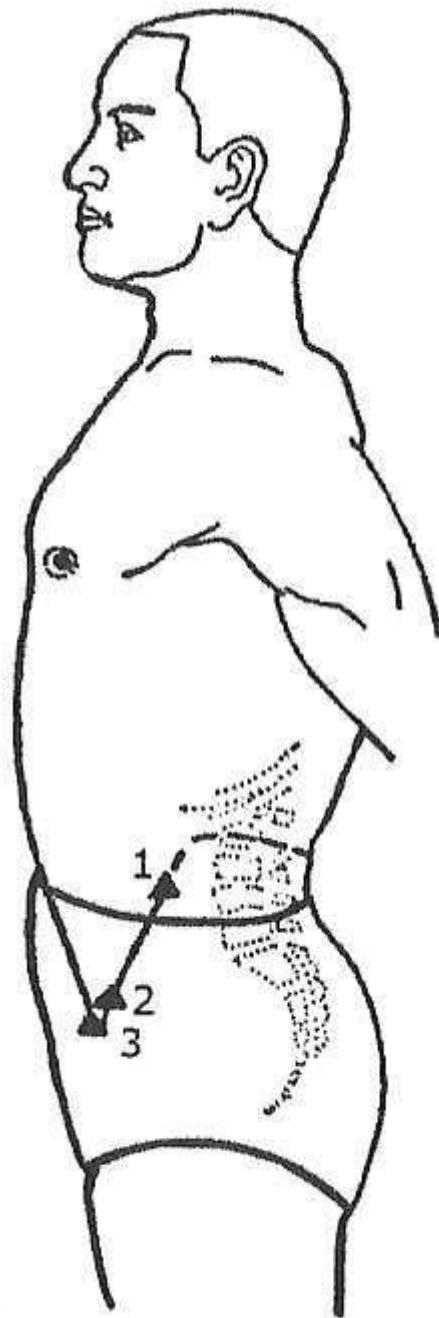
1. Qichong (E 30)
2. Henggu (R 11)
3. Dahe (R 12)
4. Qixue (R 13)
5. Siman (R 14)
6. Zhongzhu (R 15)
7. Huangshu (R 16)
8. Shanggu (R 17)
9. Shiguan (R 18)
10. Yindu (R 19)
11. (Fu) Tonggu (R 20)
12. Youmen (R 21)
13. Yinjiao (R 7)
14. Huiyin (RM 1)



CHONG MAI

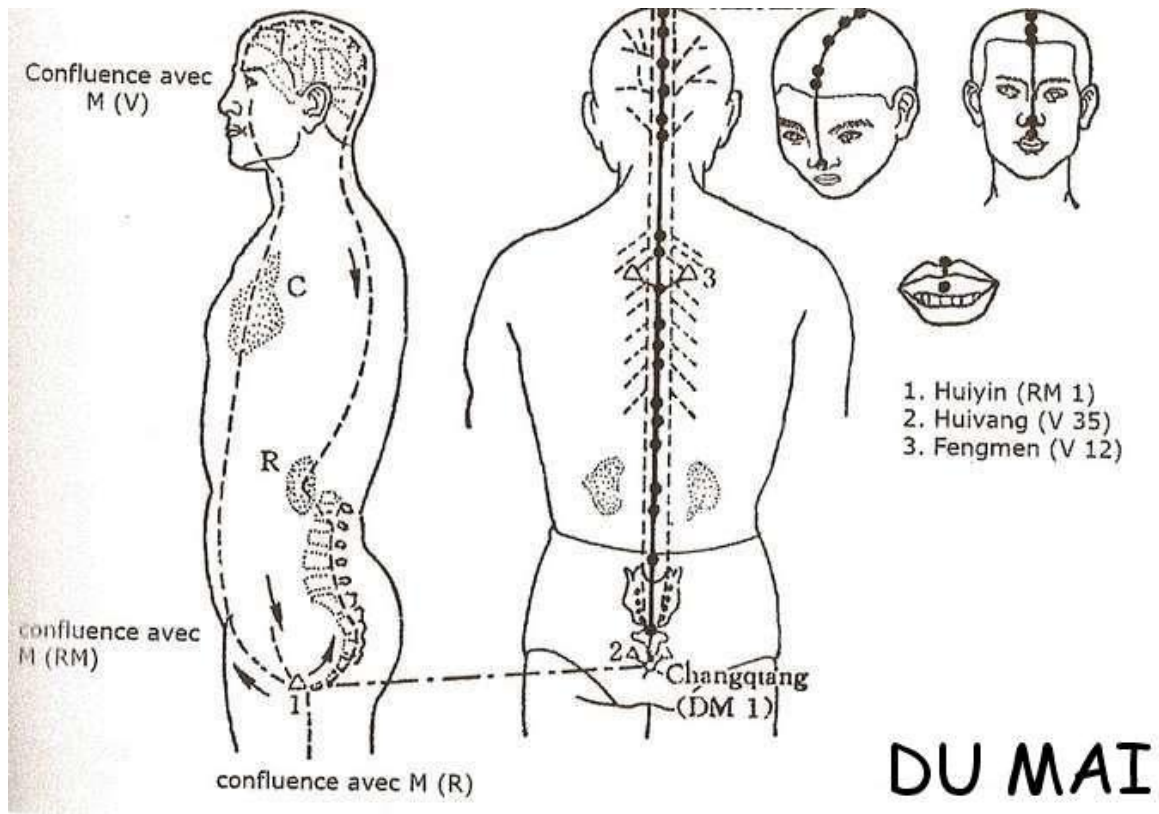
le DAI MAI

1. Daimai (VB 26)
2. Wushu (VB 27)
3. Weidao (VB 28)

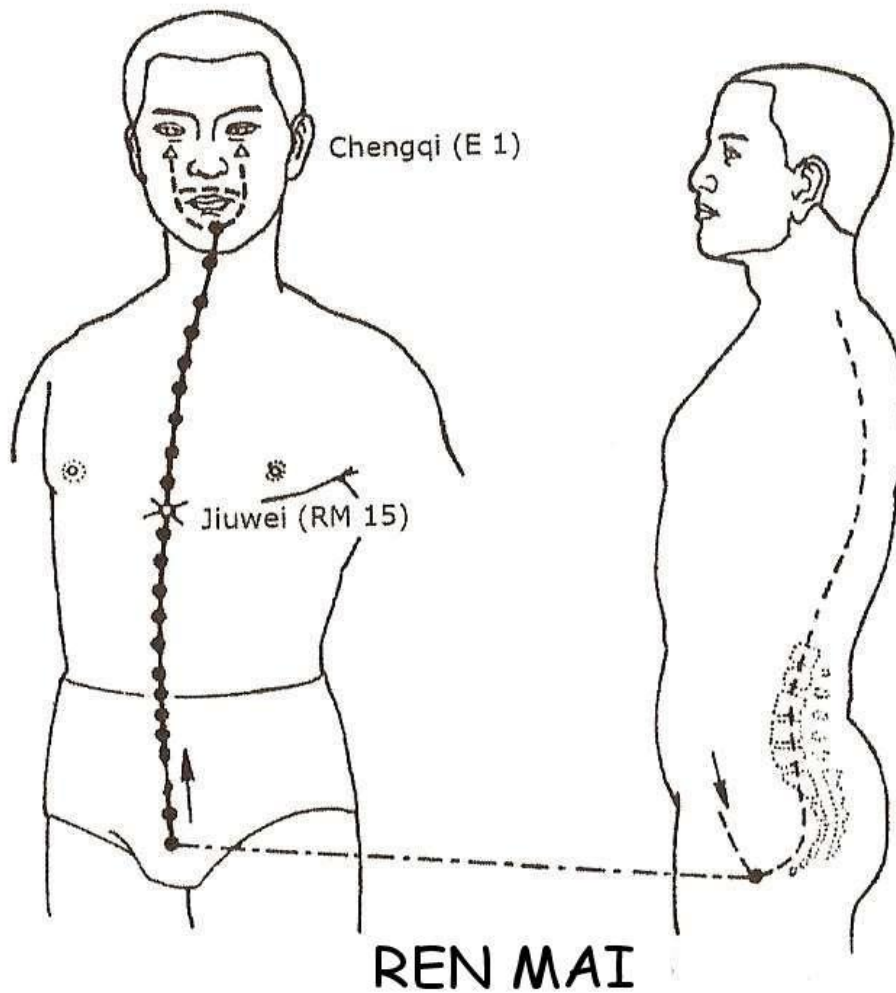


DAI MAI

le DU MAI

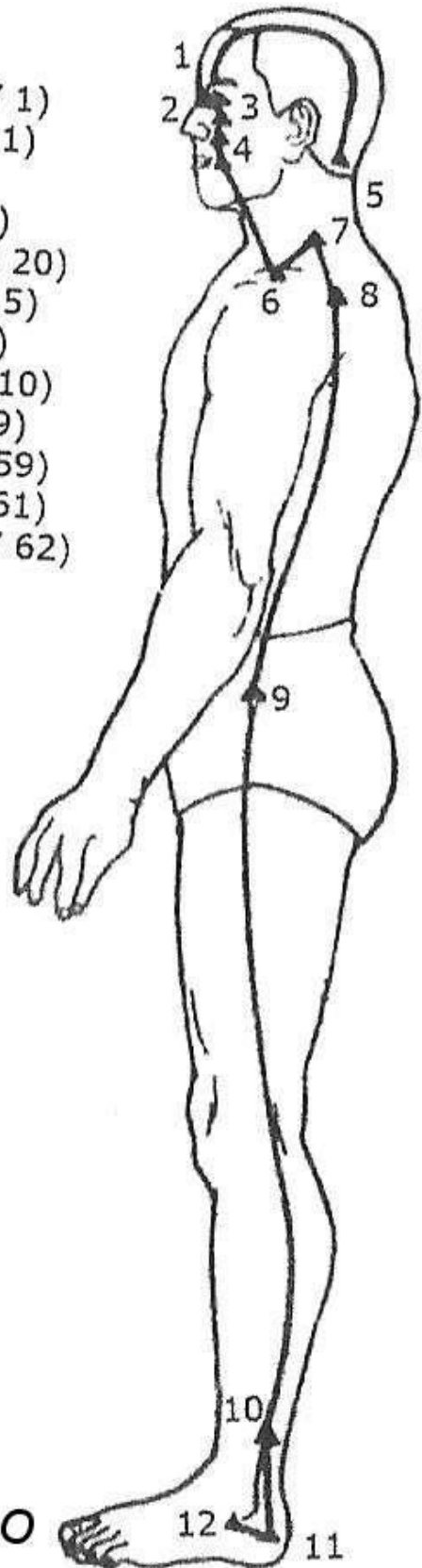


Le REN MAI



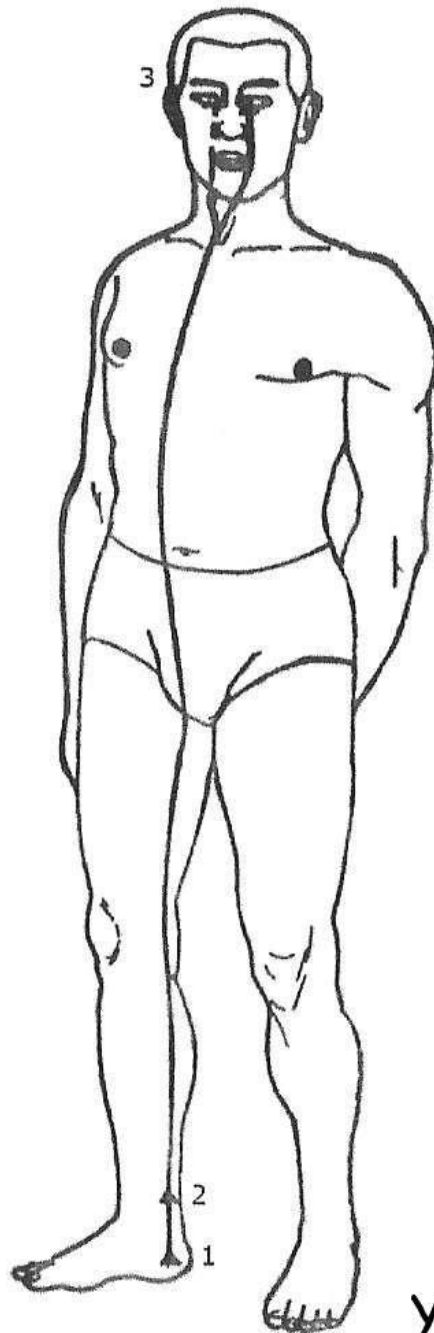
Le YANG QIAO MAI

1. Jingming (V 1)
2. Chengqi (E 1)
3. Juliao (E 3)
4. Dicang (E 4)
5. Fengchi (VB 20)
6. Jianyu (GI 15)
7. Jugu (GI 16)
8. Naoshu (IG 10)
9. Juliao (VB 29)
10. Fuyang (V 59)
11. Pushen (V 61)
12. Shenmai (V 62)



YANG QIAO

Le YIN QIAO MAI

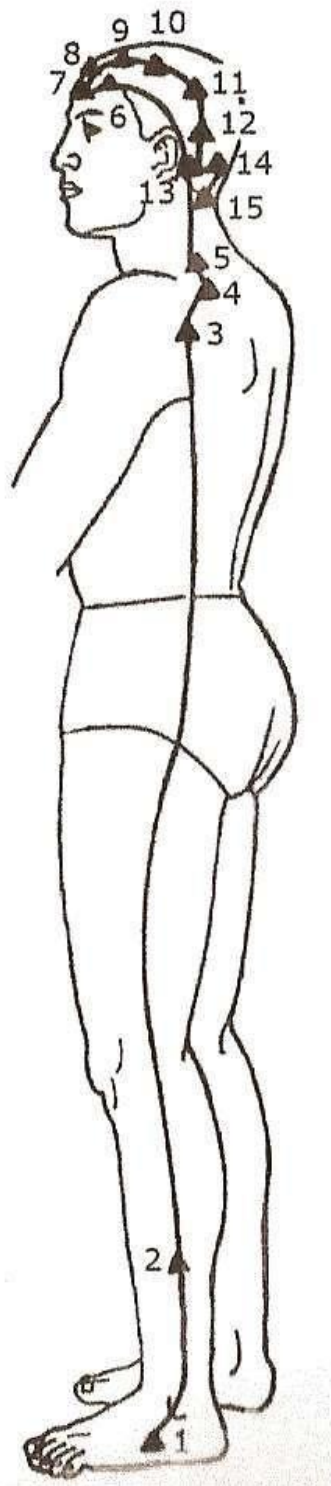


1. Zhaohai (R 6)
2. Jiaoxin (R 8)
3. Jingming (V 1)

YIN QIAO

Le YANG WEI MAI

1. Jinmen (V 63)
2. Yangjiao (VB 35)
3. Naoshu (IG 10)
4. Tianliao (TR 15)
5. Jianjing (VB 21)
6. Benshen (VB 13)
7. Yangbai (VB 14)
8. Toulinqi (VB 15)
9. Muchuan (VB 16)
10. Zhengying (VB 17)
11. Chengling (VB 18)
12. Naokong (VB 19)
13. Fengchi (VB 20)
14. Fengfu (DM 16)
15. Yamen (DM 15)



YANG WEI

Le YIN WEI MAI

1. Zhubin (R 9)
2. Chongmen (Rte 12)
3. Fushe (Rte 13)
4. Daheng (Rte 15)
5. Fuai (Rte 16)
6. Qimen (F 14)
7. Tiantu (RM 22)
8. Lianquan (RM 23)

YIN WEI

